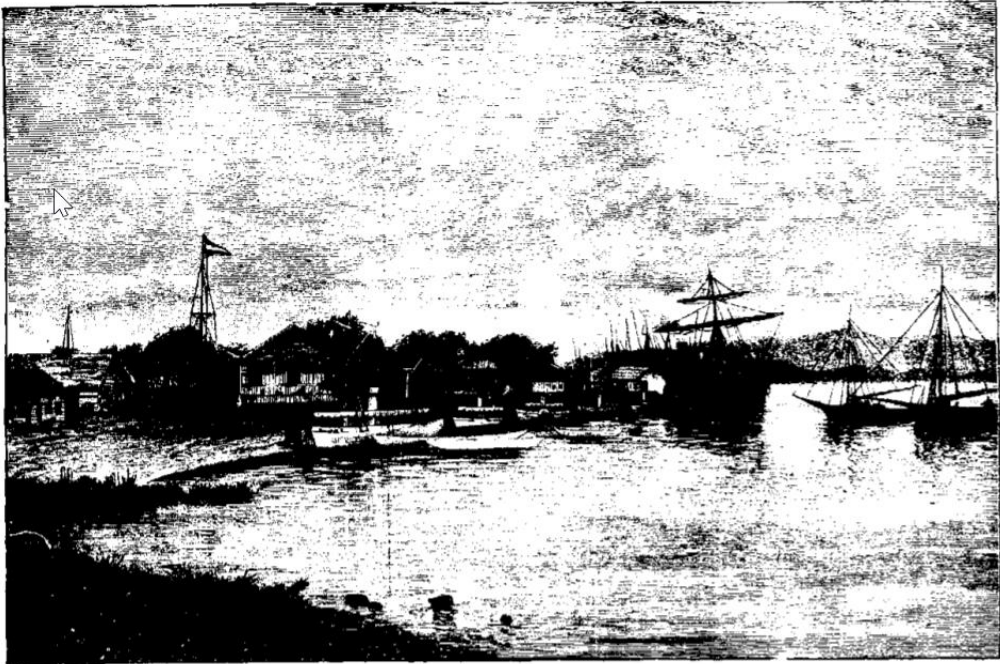


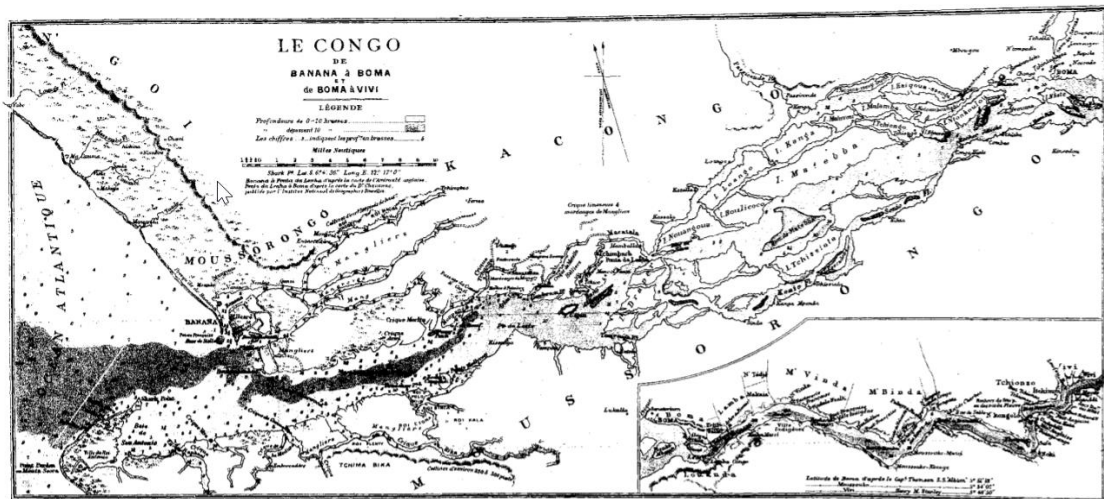


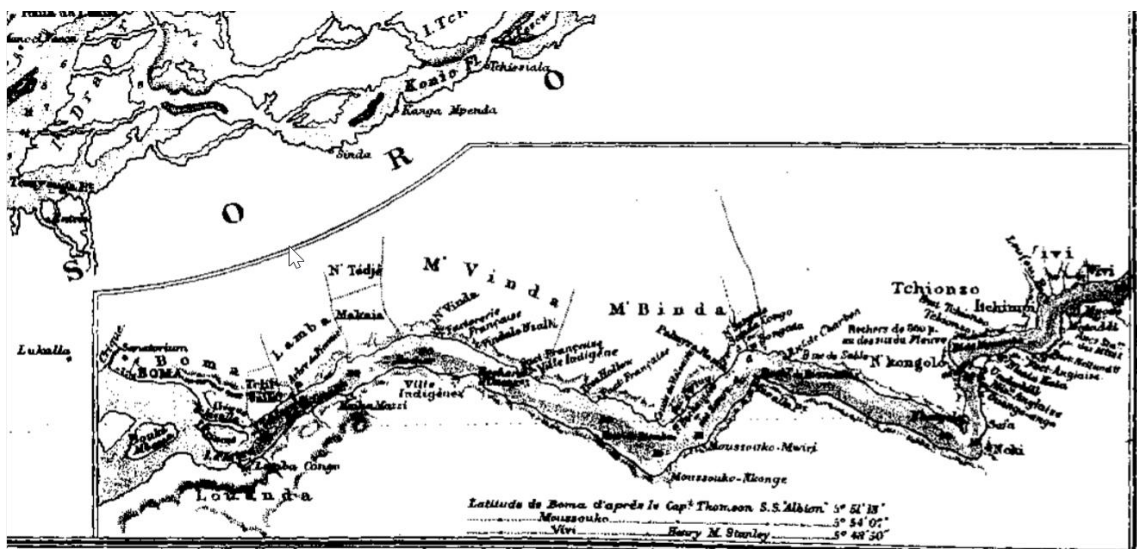
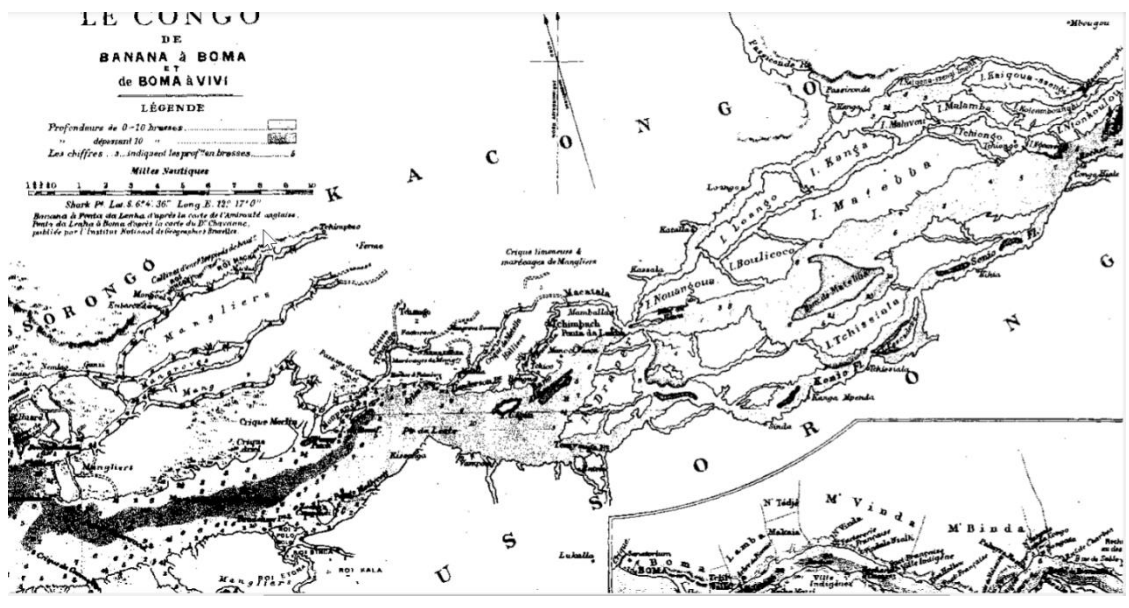
LE COLONEL STRAUCH

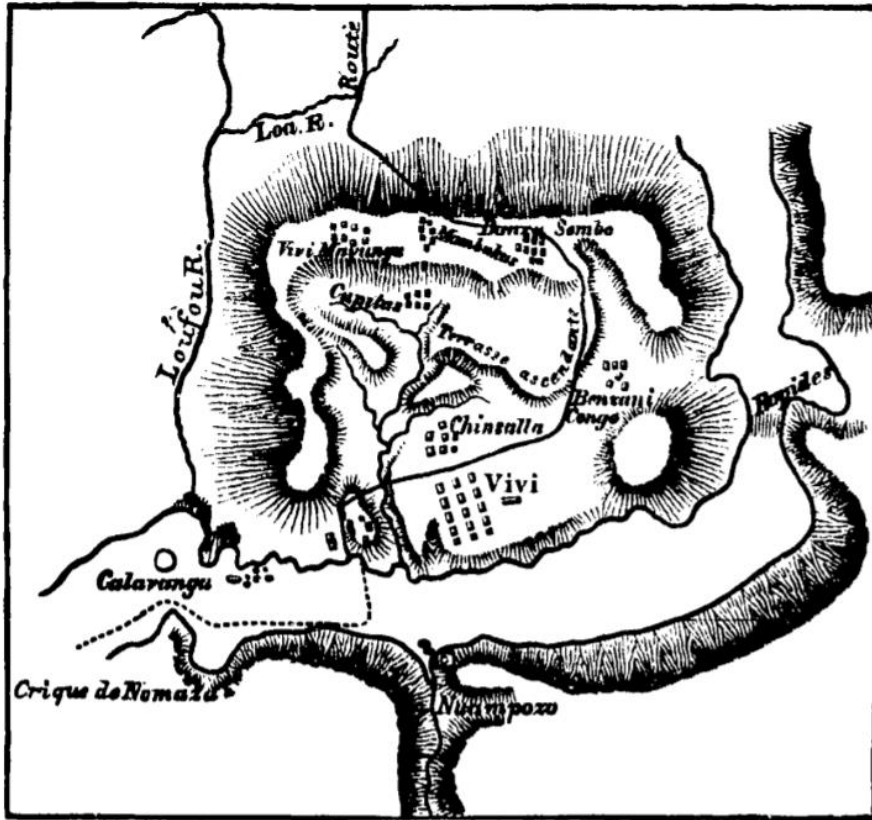
Président de l'Association Internationale du Congo,
Secrétaire-général de l'Association Internationale africaine.



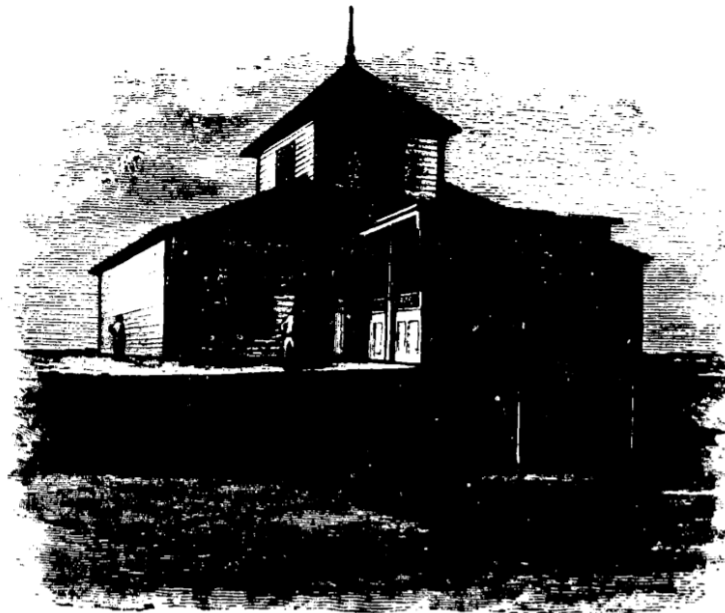
LA FLOTILLE DE L'EXPÉDITION INTERNATIONALE A LA POINTE DE BANANA.







PLAN DE VIVI.



LE QUARTIER-GÉNÉRAL DE VIVI, VU DU NORD.

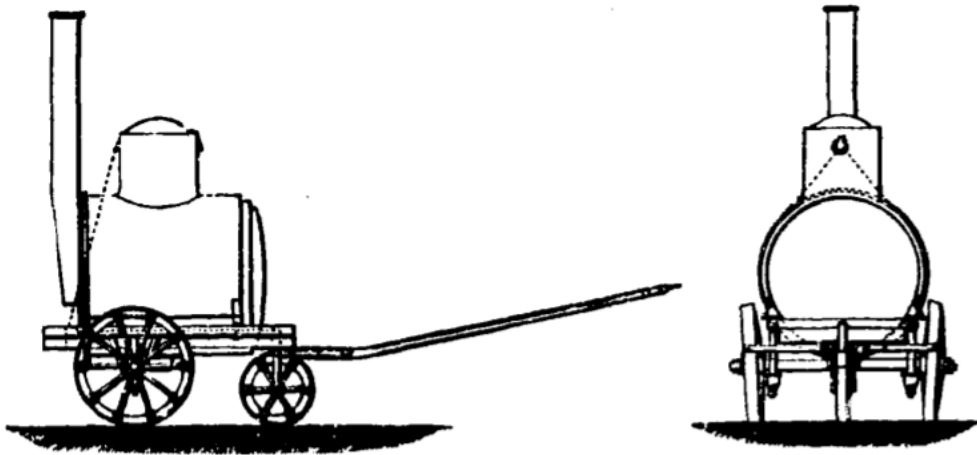
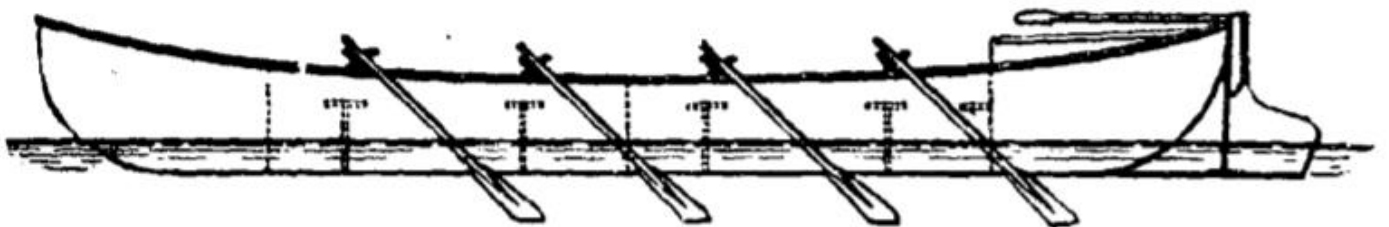


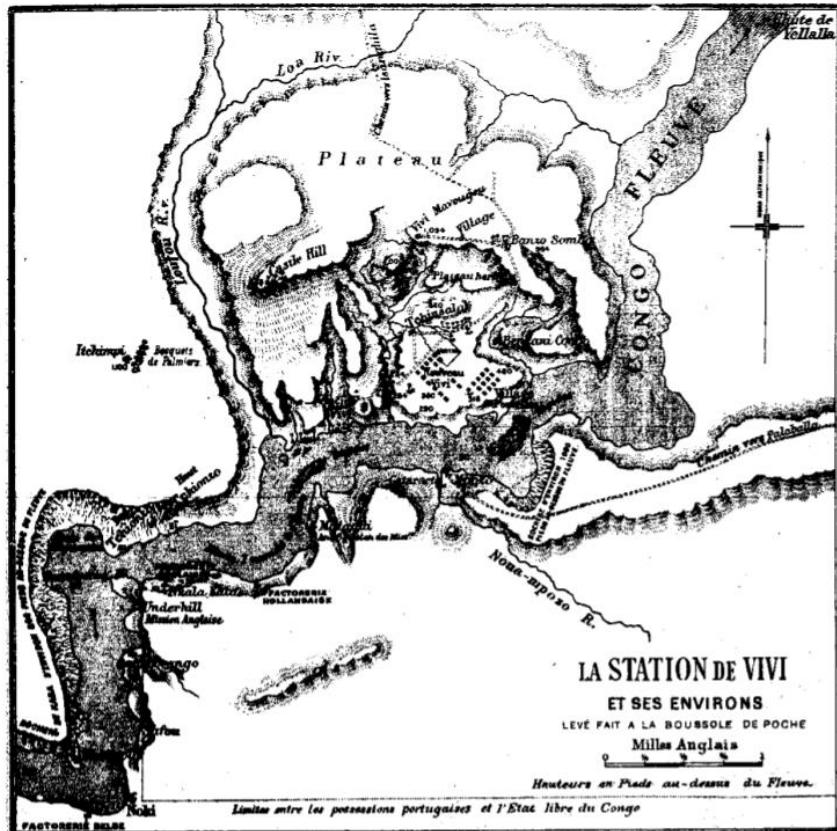
DIAGRAMME DES FOURGONS POUR LE TRANSPORT DES MACHINES.



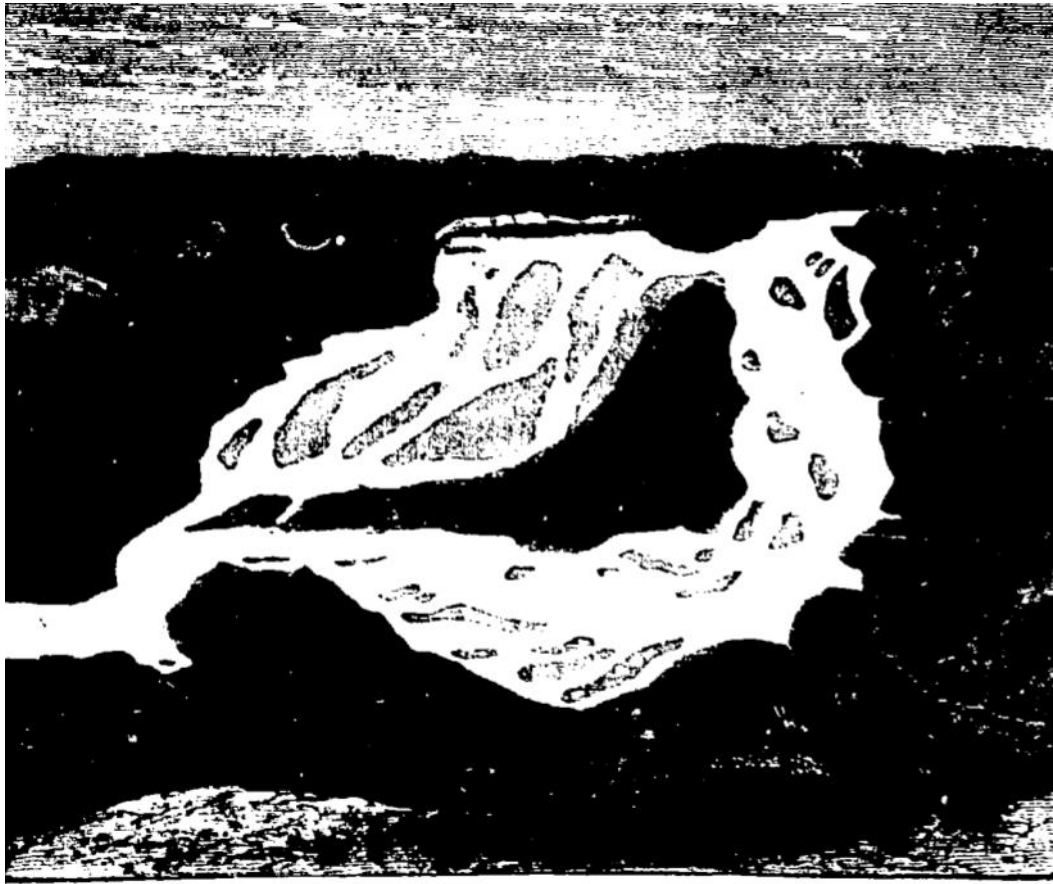
HAUTEUR D'UNE ALLÈGE D'ACIER.



PLAN DES ALLÈGES.



Institut National de Géographie, Bruxelles.



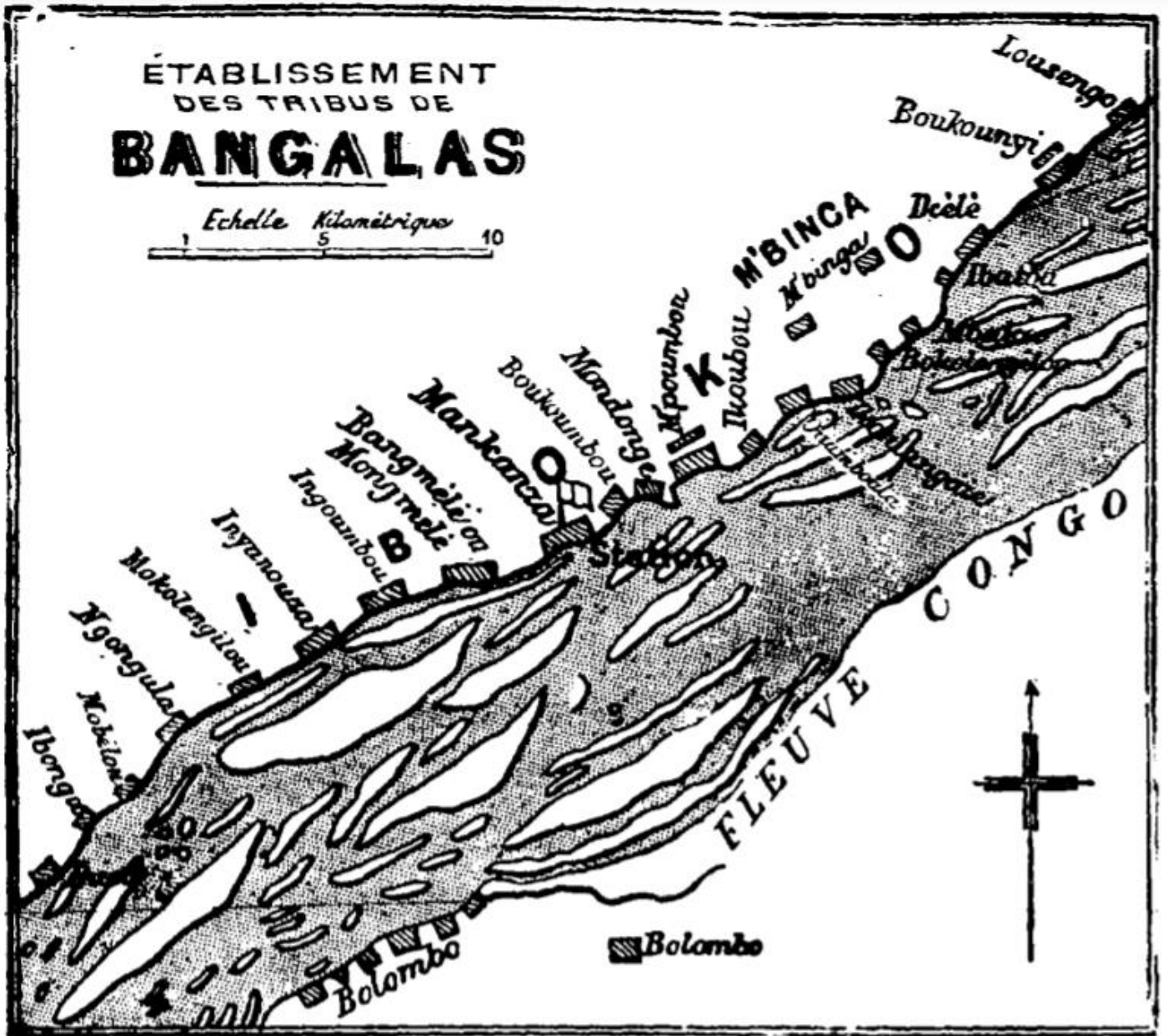
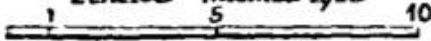
LE STANLEY-POOL VU A VOL D'OISEAU.



FEMMES INDIGENES SUR LA PLACE DU MARCHÉ A LÉOPOLDVILLE.

ÉTABLISSEMENT
DES TRIBUS DE
BANGALAS

Echelle Kilométrique



PLAN DES ÉTABLISSEMENTS BANGALAS.



UNE RUE A IUKO.



SACRIFICES HUMAINS CHEZ LES OKAVANGOS, PRÈS LA STATION DE L'ÉQUATEUR.

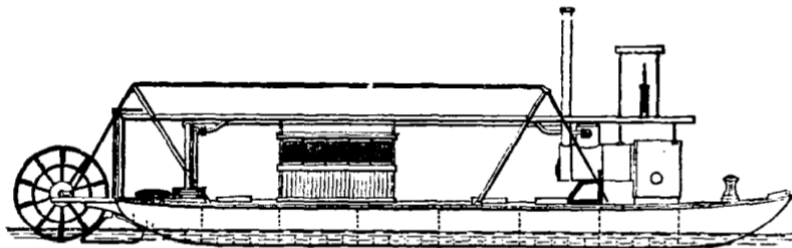
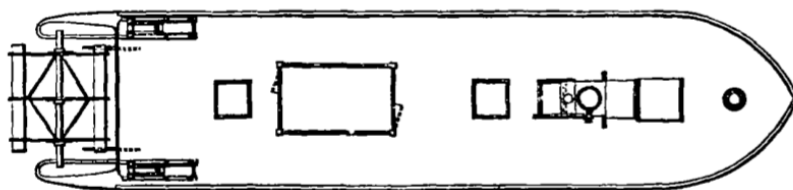
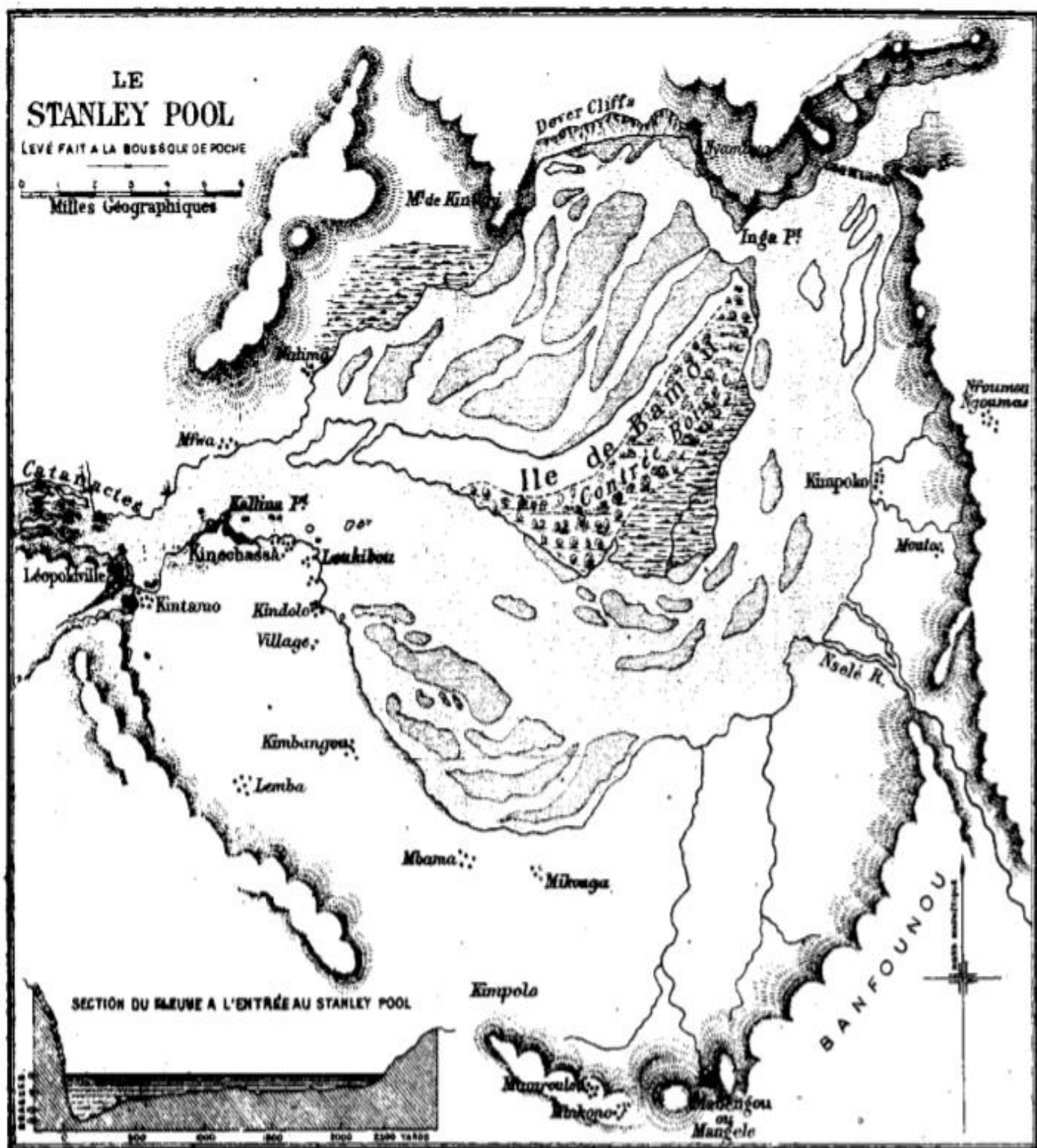


DIAGRAMME DU STEAMER « LE STANLEY ».

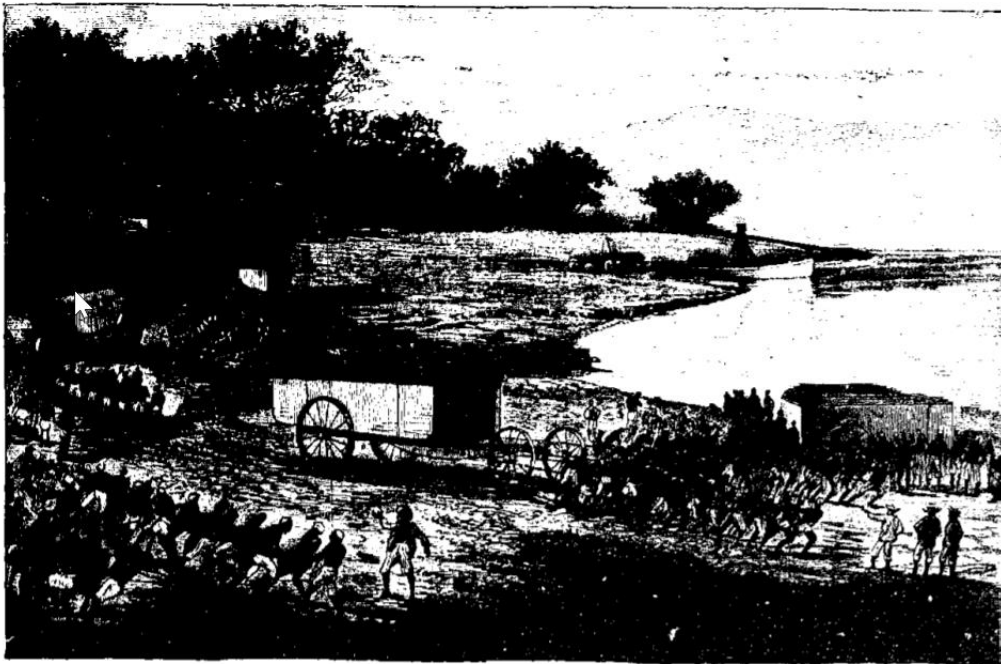
17



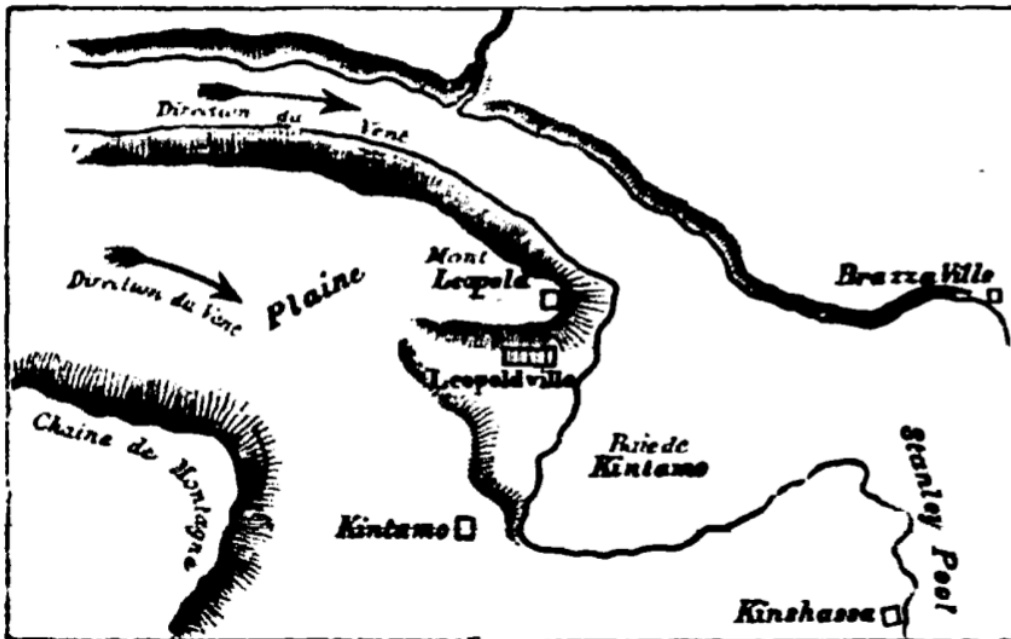
PLAN DU « STANLEY »



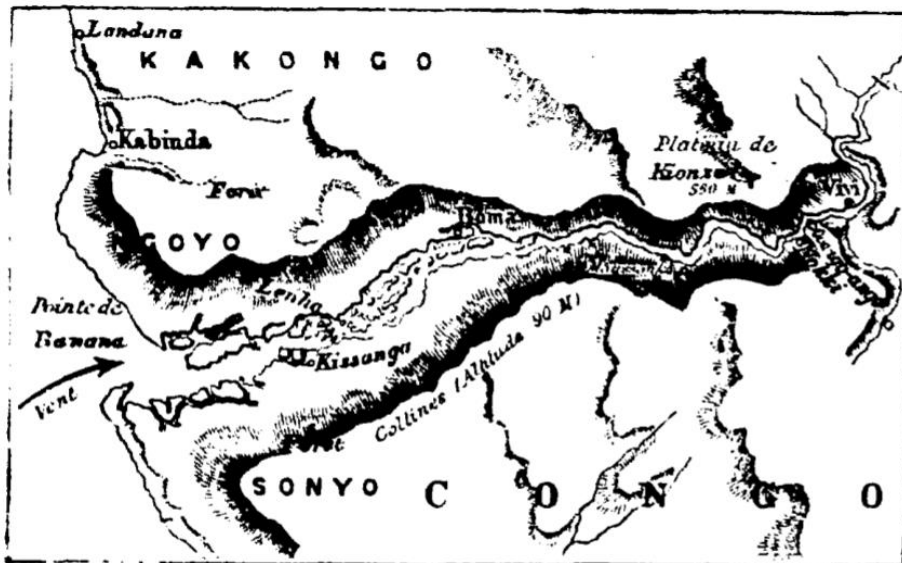
Institut National de Géographie, Bruxelles.



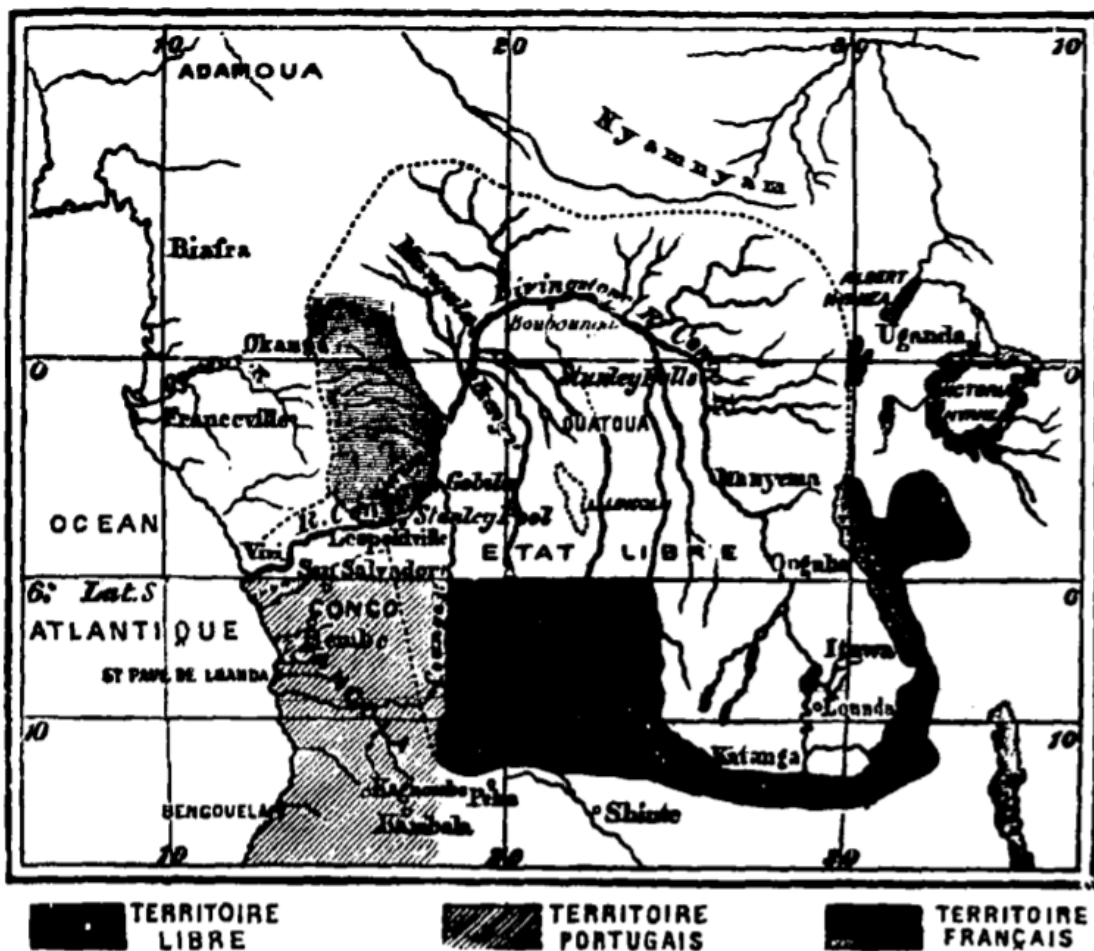
LE STEAMER DÉMONTABLE « LE STANLEY » QUITTANT LA JETÉE DE VIVI.



PLAN DE LA DIRECTION DES VENTS A LÉOPOLDVILLE.



L'ENTONNOIR DU BAS-CONGO.



DIVISION POLITIQUE DU BASSIN DU CONGO.