

A PIECE OF THE CONGO STATE RAILWAY

Pioneering on the Congo

BY THE

REV. W. HOLMAN BENTLEY

CHEVALIER DE L'ORDRE ROYAL DU LION

AUTHOR OF 'THE DICTIONARY AND GRAMMAR OF THE KONGO LANGUAGE'

TRANSLATOR OF THE NEW TESTAMENT INTO KONGO

'LIFE ON THE CONGO,' ETC.

VOLUME II



WITH A MAP AND 206 ILLUSTRATIONS FROM
SKETCHES, PHOTOGRAPHS AND MATERIALS

SUPPLIED BY THE BAPTIST MISSIONARY SOCIETY, SEVERAL OF THEIR MISSIONARIES
AND THE GOVERNMENT OF THE CONGO FREE STATE

NEW YORK CHICAGO TORONTO
FLEMING H. REVELL COMPANY

PUBLISHERS OF EVANGELICAL LITERATURE

1900



MISS L. M. DE HAILES



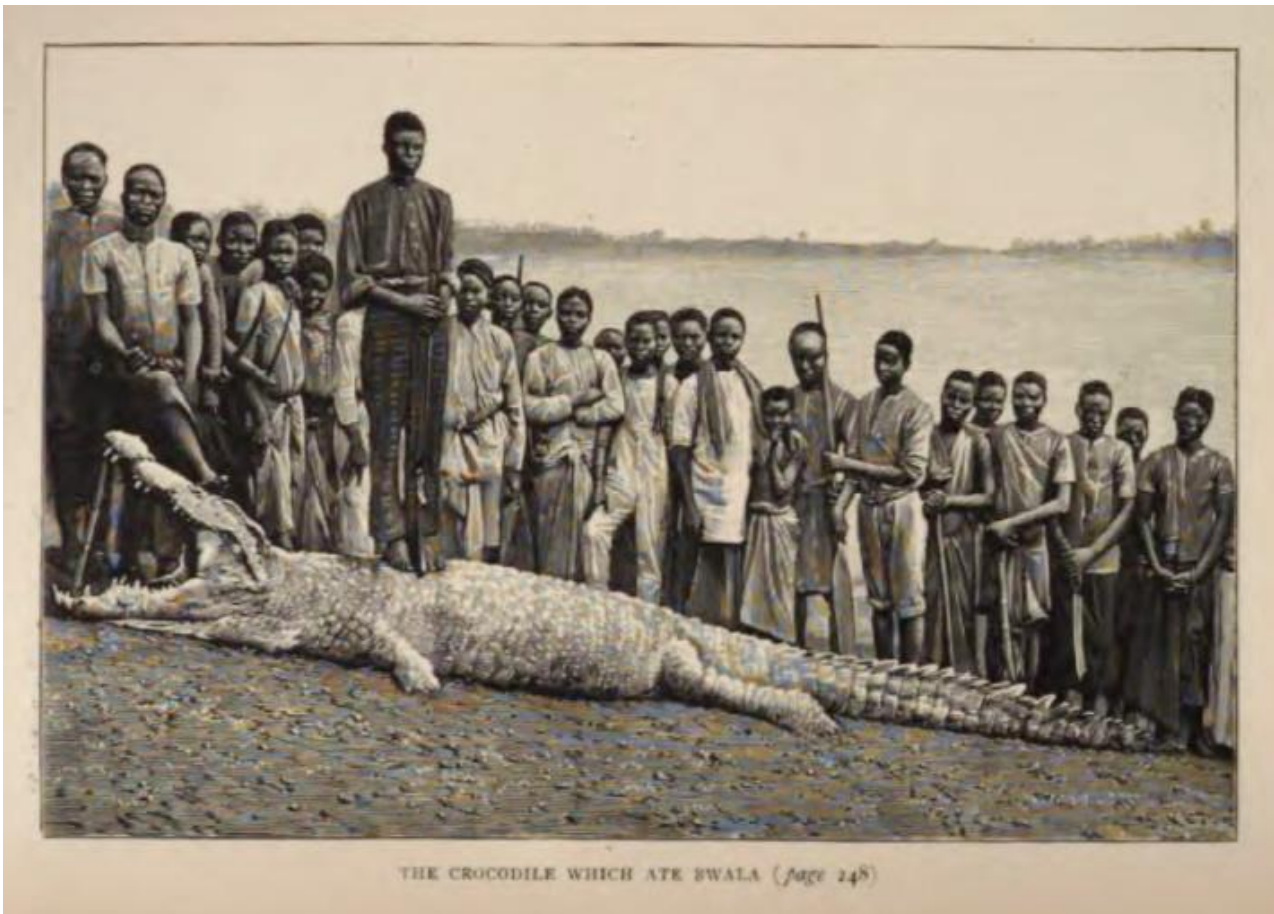
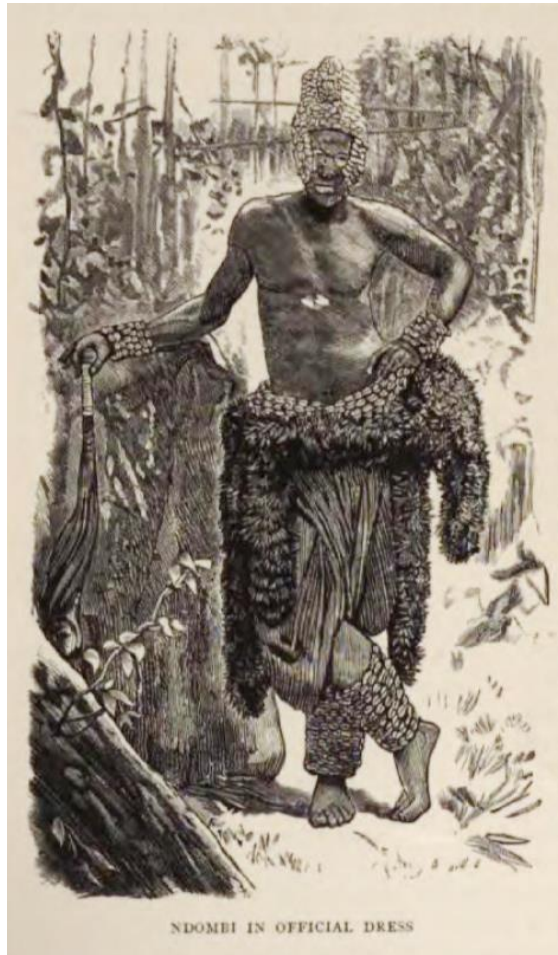
LUKOLELA MISSION HOUSE; a young oil palm in the foreground (*Elais guineensis*)



J. WHITEHEAD



NDOMBI IN FETISH DRESS





LUSALA KAVUNDI



'AL FRESCO' SCHOOL, LUKOLELA



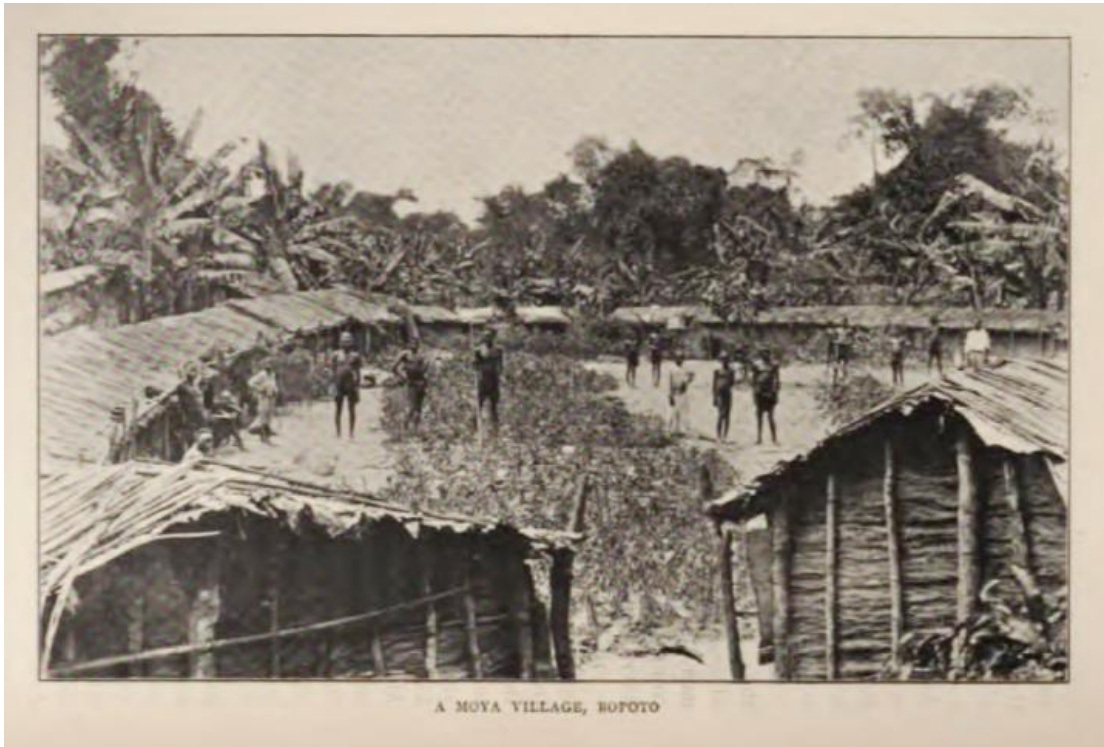
HIGH STREET, MONSEMBE



POLYGAMY TERRACE,
MONSEMBE



BANGALA VILLAGE, BOFOTO



A MOYA VILLAGE, BOFOTO



ORAM'S GRAVE



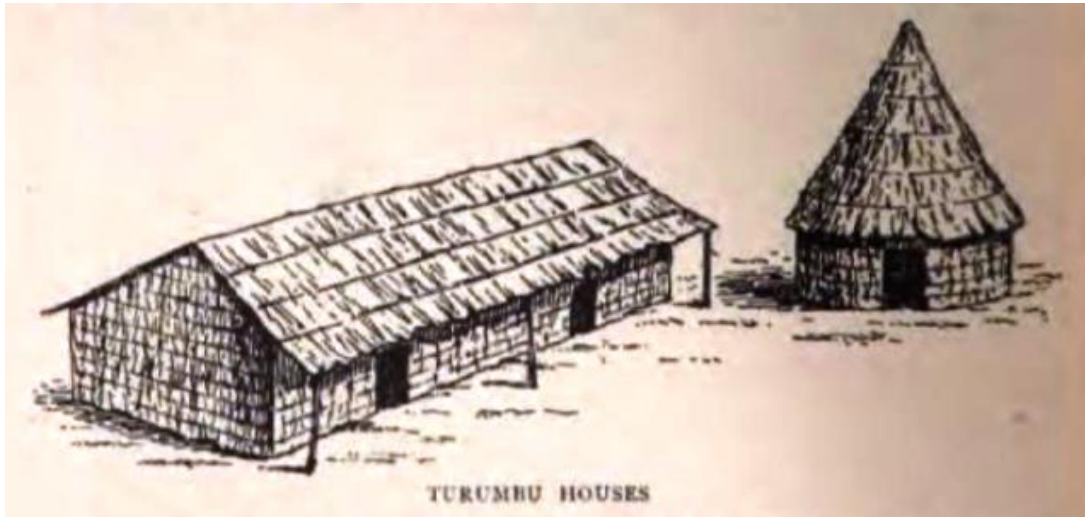
FIRST CONVERTS AT BOPOTO



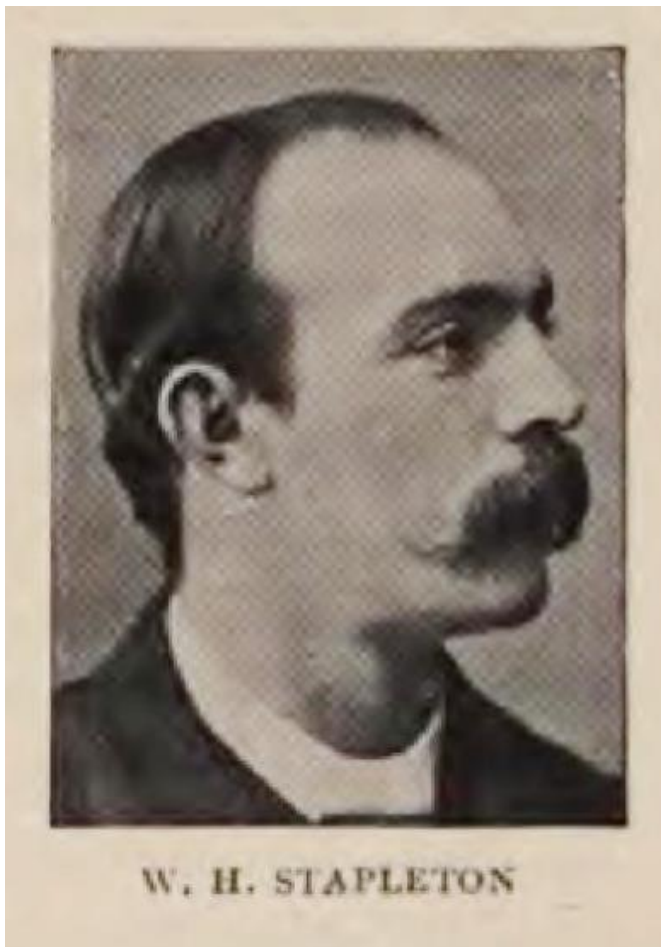
THE GOODWILL LEAVING BOPOTO TO FOUND SARGENT STATION, YAKUMU



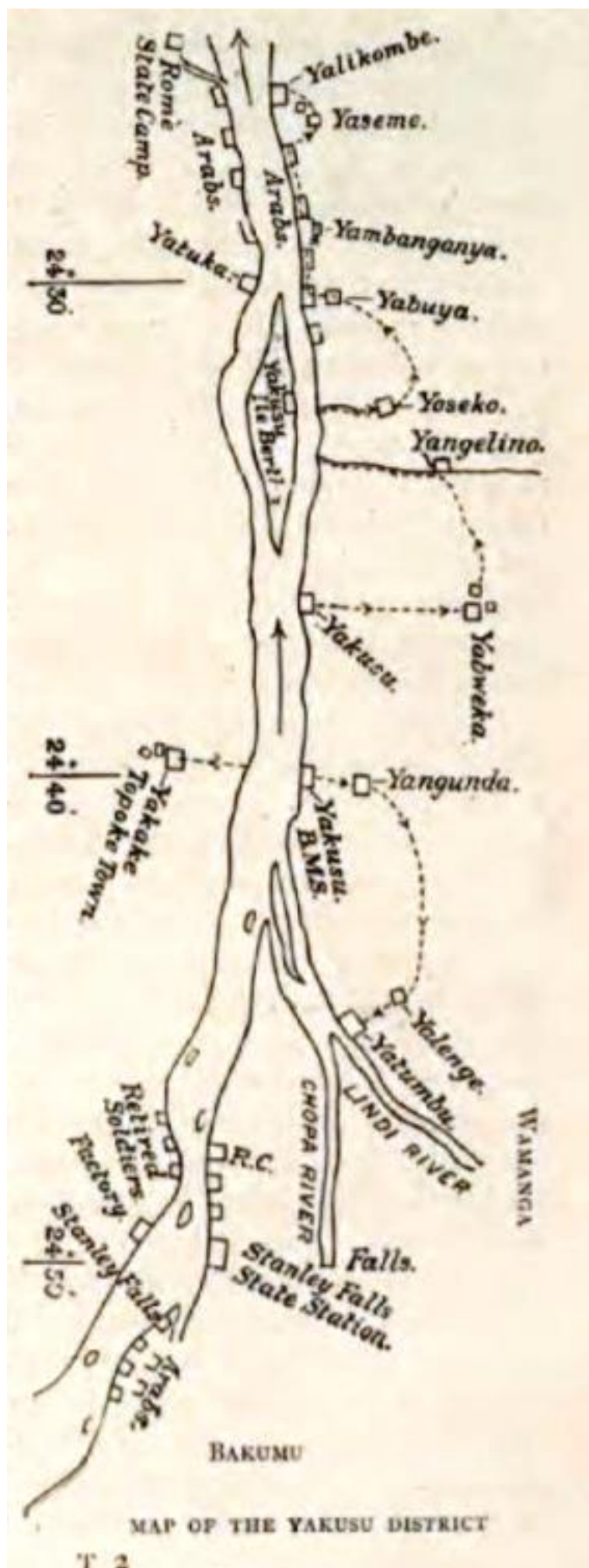
RUINS OF ARAB MOSQUE AT ISANGI

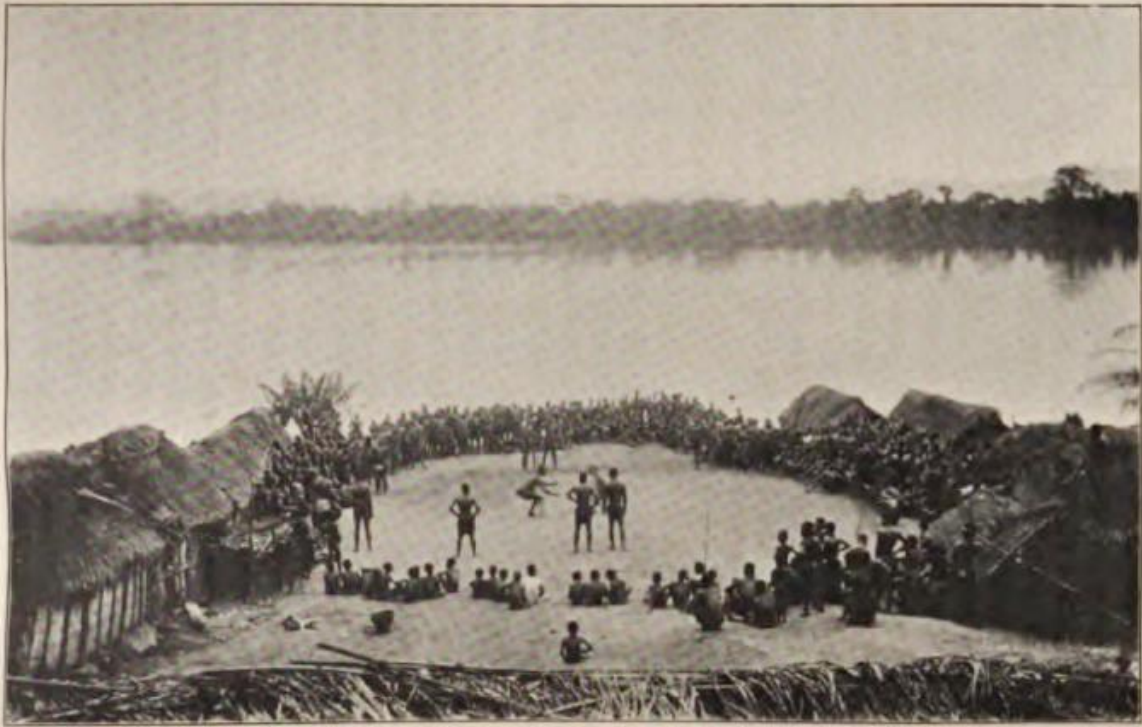


TURUMBU HOUSES

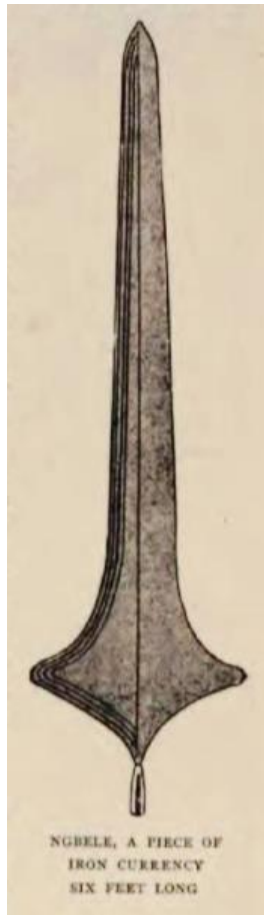


W. H. STAPLETON





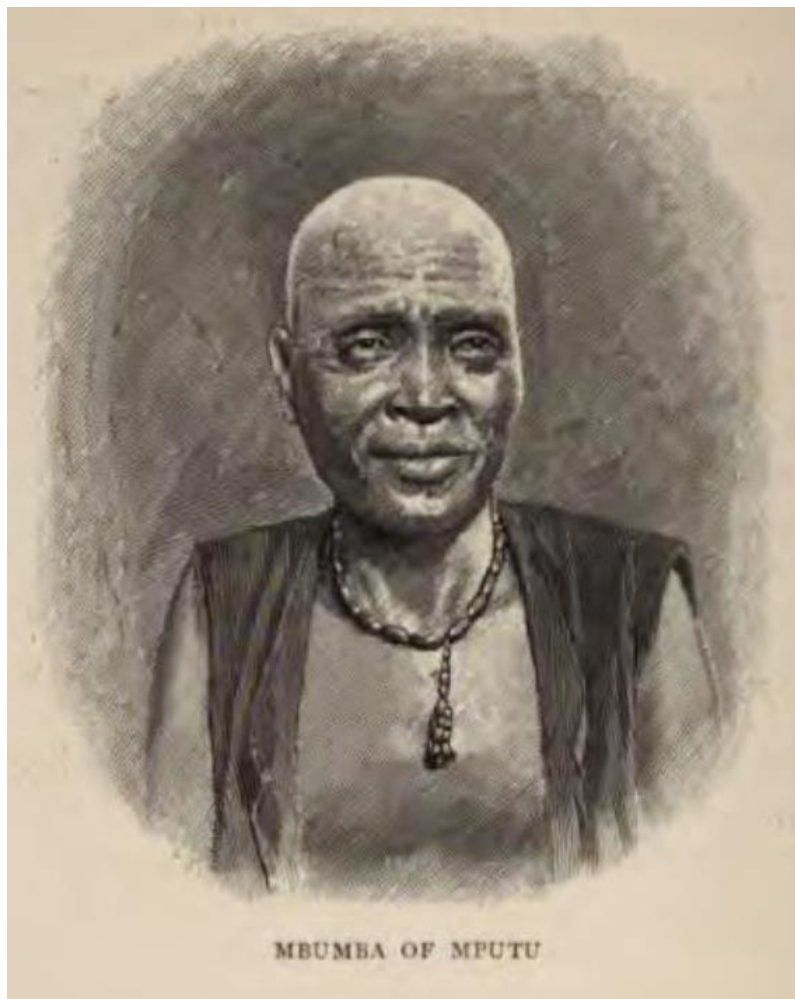
A WRESTLING MATCH



NGBELE, A PIECE OF
IRON CURRENCY
SIX FEET LONG



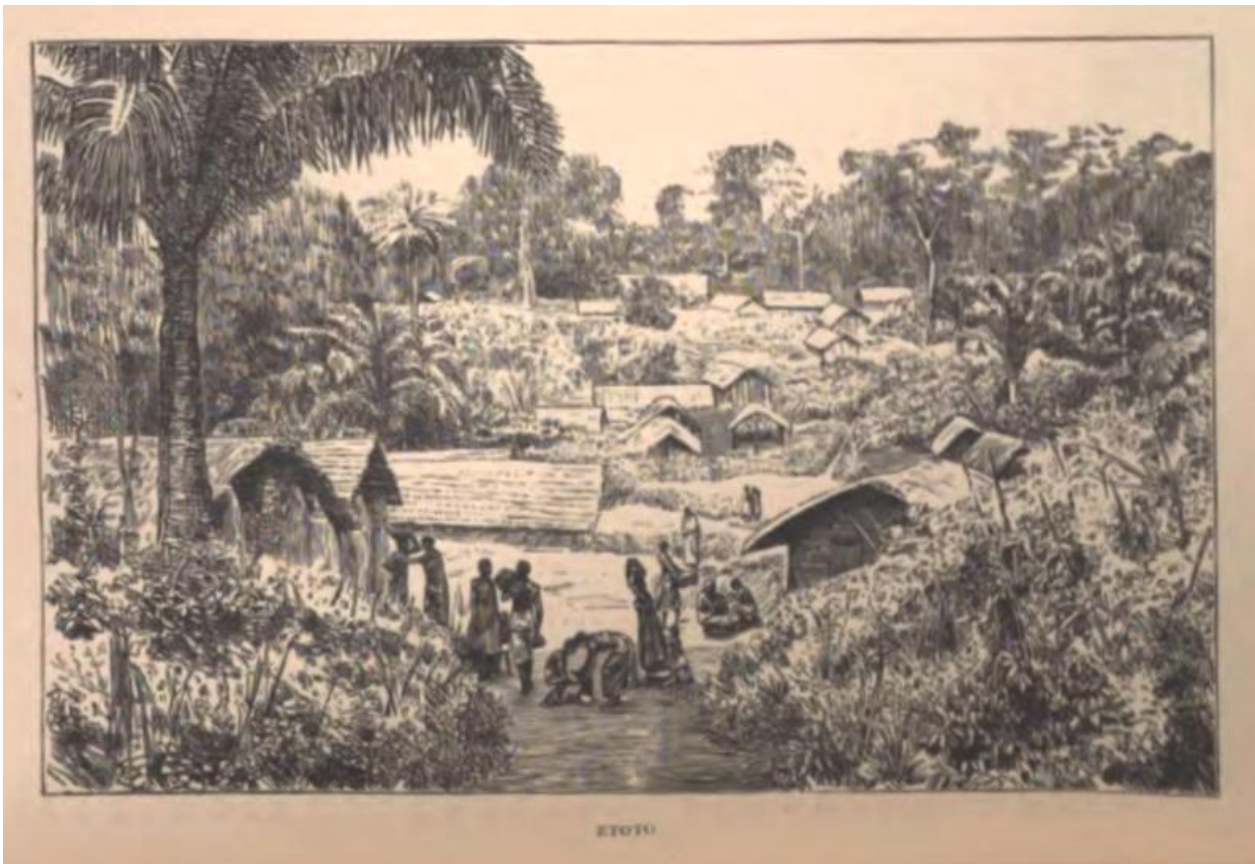
SARGENT STATION



MBUMBA OF MPUTU



R. H. C. GRAHAM



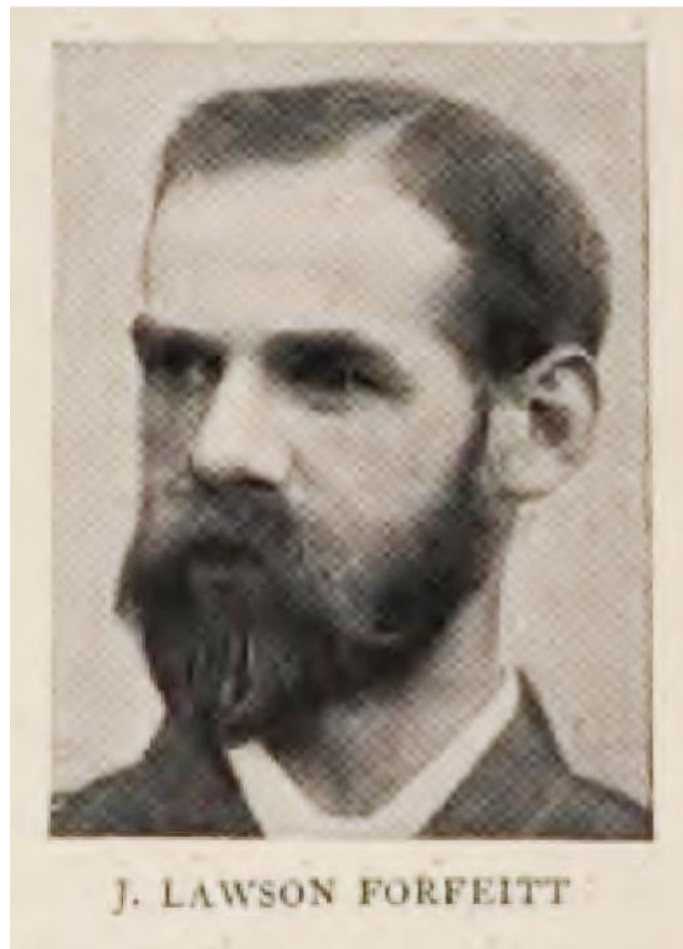
ETOTO

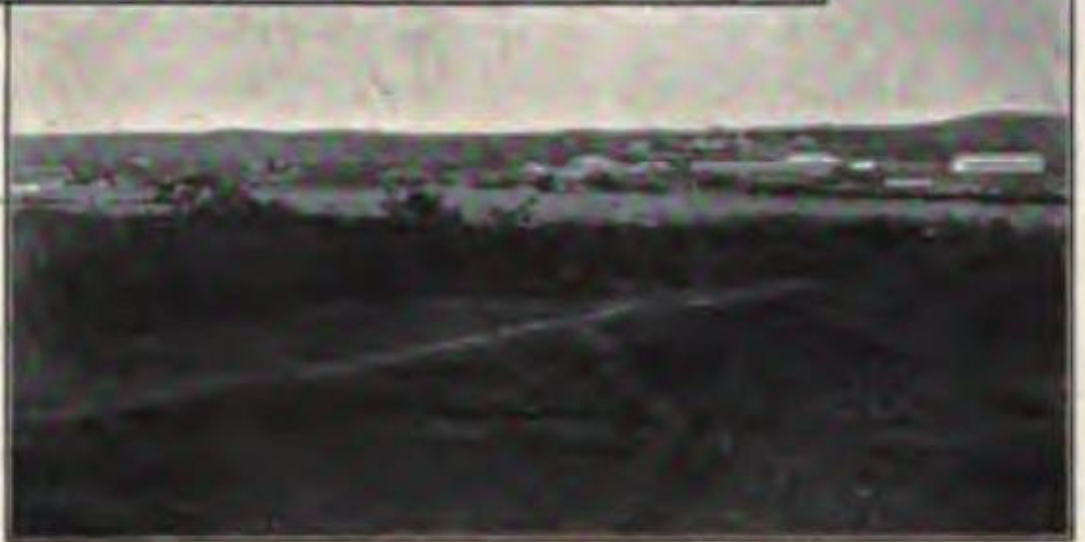


NEW MISSION CHAPEL IN BUILDING, SAN SALVADOR



NEW CHAPEL, SAN SALVADOR, COMPLETED





TUMBA AND RAILWAY STATION



MISSION HOUSE, WATHEN



MAKITU'S VILLAGE, MATADI



STANLEY FALLS (see page 189)



KINSUKA VILLAGE



PHILIP DAVIES, B.A.



LO (page 347)



SOME OF MAKITU'S WIVES



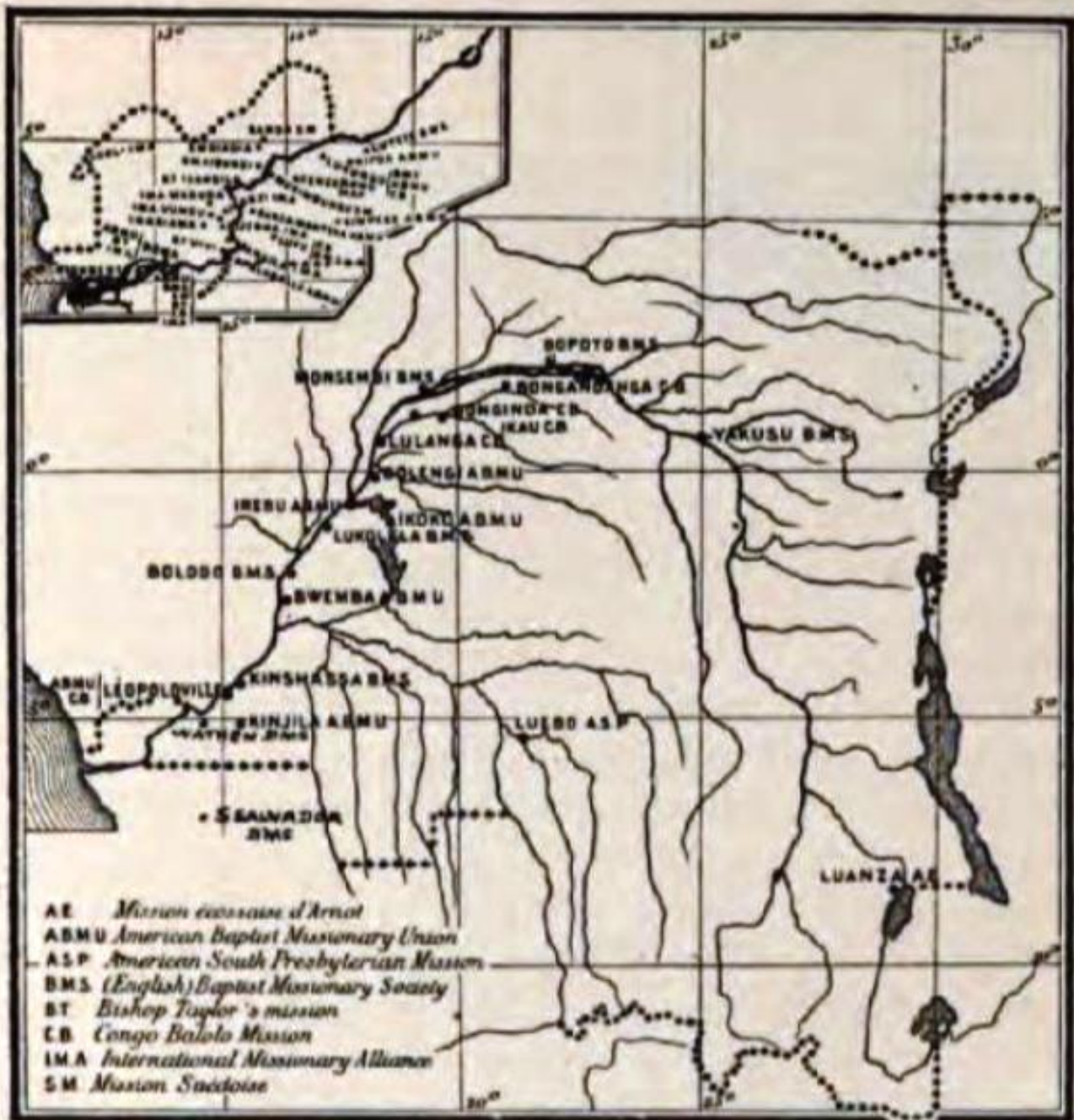
MISSION HOUSE, WATHEN. THE CHILDREN FROM MR. BELL'S DISTRICT



MR. BENTLEY'S HOUSE AT WATHEN



COMMENCING THE NEW STATION AT KIBOKOLO, ZOMBO



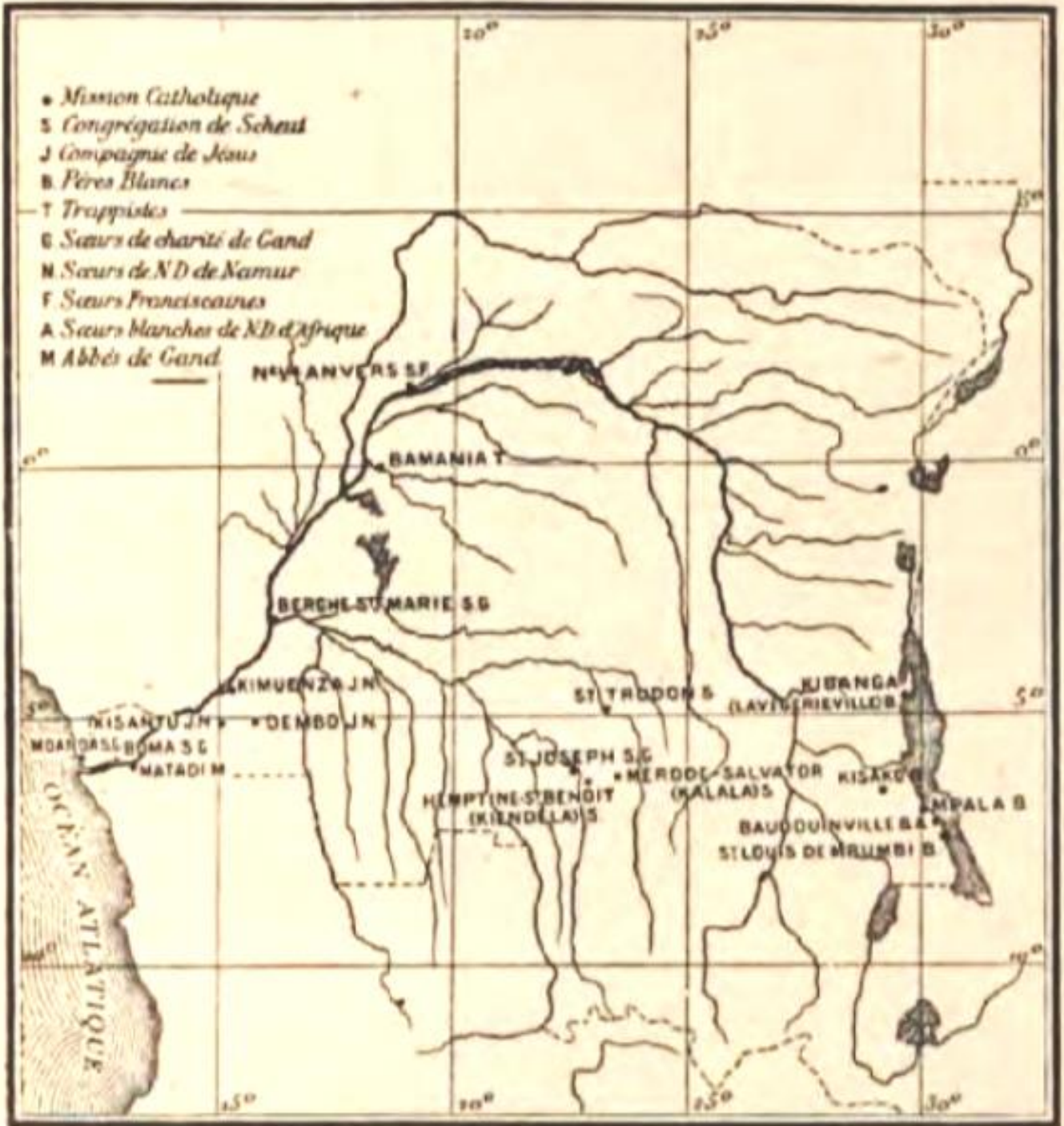
MAP OF THE PROTESTANT MISSIONS ON THE CONGO



AMERICAN BAPTIST MISSION, ILEBO



ROMAN CATHOLIC MISSION, MATADI



MAP OF THE ROMAN CATHOLIC MISSIONS ON THE CONGO



SEVEN POSTAGE STAMPS OF THE CONGO FREE STATE ; TWO OF THE PORTUGUESE CONGO, ONE OF WHICH BEARS THE POSTMARK OF SAN SALVADOR

